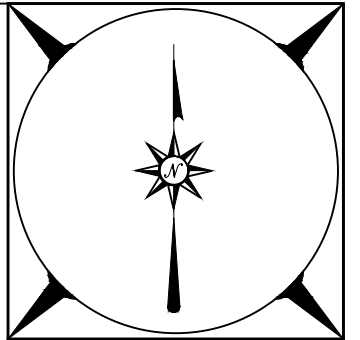


**SPECIAL IMPROVEMENT DISTRICT No. 5 LARGE CAPACITY  
AUGMENTATION WELL #2 PIPELINE & ROAD**  
Located in Saguache County, Colorado  
NE $\frac{1}{4}$  Sec.15, T.44N., R.8E, N.M.P.M

Sheet Index

- Sheet 1 of 9 – Title Sheet and Vicinity Map
- Sheet 2 of 9 – Site & Utility Notes
- Sheet 3 of 9 – Existing Conditions Map
- Sheet 4 of 9 – Proposed Construction Map
- Sheet 5 of 9 – Detail Sheet 1
- Sheet 6 of 9 – Detail Sheet 2
- Sheet 7 of 9 – Detail Sheet 3
- Sheet 8 of 9 – Pipeline Plan & Profile 1
- Sheet 9 of 9 – Pipeline Plan & Profile 2



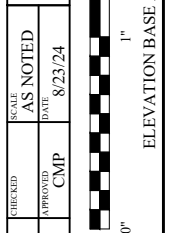
**DAVIS ENGINEERING SERVICE, INC.**



THIS DRAWING IS THE PROPERTY OF DAVIS ENGINEERING SERVICE, INC. AND IS NOT TO BE REPRODUCED OR TRANSMITTED IN ANY FORM OR BY ANY MEANS, WITHOUT THE WRITTEN APPROVAL OF DAVIS ENGINEERING SERVICE, INC.

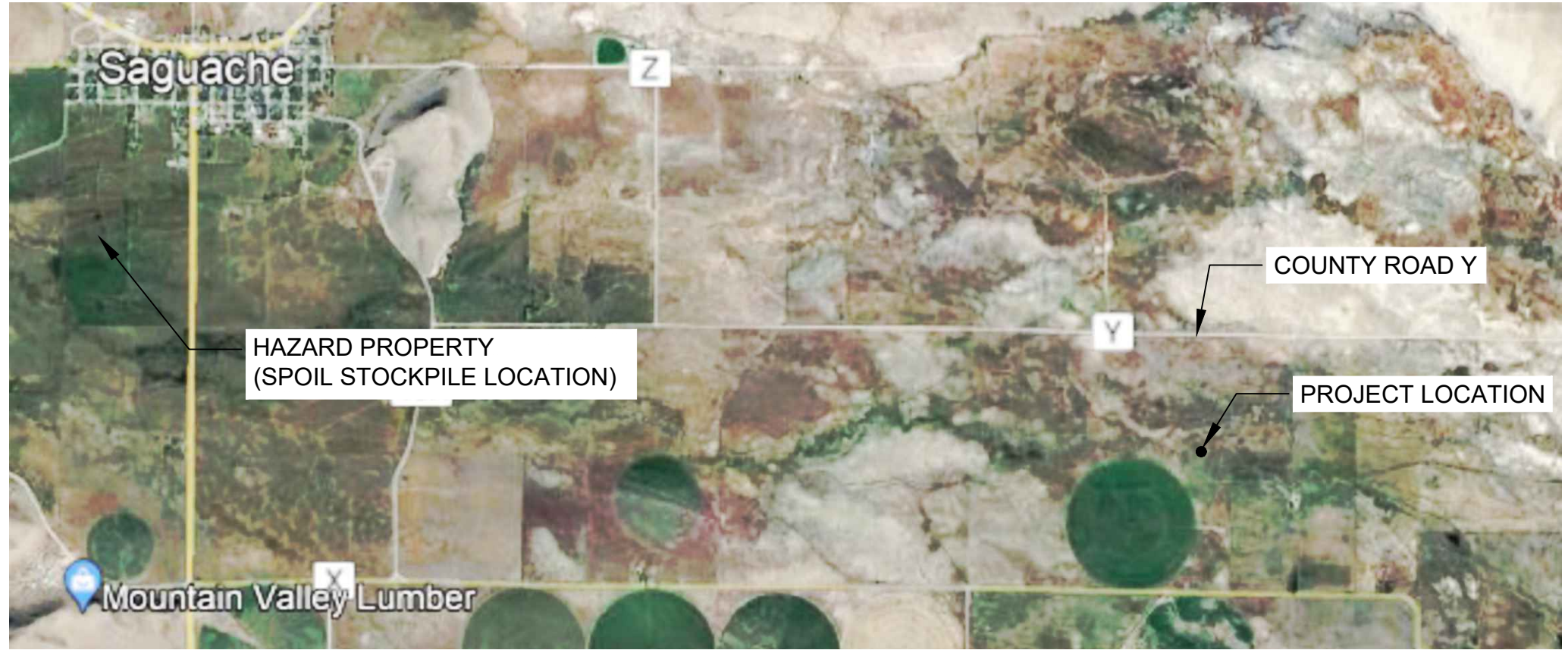
DATE	BY	APPROVED

PROJECT	CHECKED	DATE
CMP/WSS	AS NOTED	8/23/24
WSS	CMP	



CLIENT	Special Improvement District No. 5 8805 Independence Way Alamosa, CO 81101
PROJECT	Large Capacity Augmentation Well #2 Pipeline & Road
DATE	Title Sheet and Vicinity Map

E02068
Sheet 1 of 9



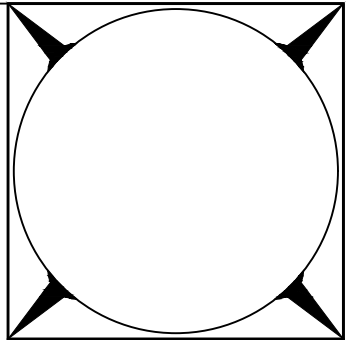
Vicinity Map  
Scale 1":3000'

GENERAL AND SITE NOTES

1. THE PURPOSE OF THIS PROJECT IS TO CONSTRUCT A ROAD FOR ACCESS TO A WELL SITE, IN ADDITION TO INSTALLING A DISCHARGE PIPELINE AND SHORT SECTION OF CHANNEL.
2. THE ROAD WILL CONSIST OF CLEARING AND GRUBBING A 12' WIDE SECTION, AND INSTALLING TWO CULVERTS. ADDITIVE ALTERNATE ITEMS INCLUDE PLACING 2" OF AGGREGATE BASE COURSE, AND 2" OF  $\frac{3}{4}$ " MINUS GRAVEL TO FORM A ROAD SURFACE.
3. THE PIPELINE WILL BE MADE OF STEEL AND PVC PIPE WITH VARYING LENGTHS AND DIAMETERS. APPURTENANCES OF THE PIPELINE WILL INCLUDE A CHECK VALVE, VENTS, A FLOW METER, AND OTHER ITEMS.
4. AT THE CREEK A DISCHARGE CHANNEL WILL BE CONSTRUCTED TO DECELERATE FLOWS AND PREVENT EROSION.
5. THE CONTRACTOR SHALL KEEP ALL OPERATIONS WITHIN THE LIMITS OF THE INDICATED EASEMENTS. THE CONTRACTOR SHALL KEEP EQUIPMENT AND MATERIALS WITHIN THESE LIMITS. CONSTRUCTION ACTIVITIES, STAGING, PARKING, OR OFF-SITE DISPOSAL SHALL NOT ENCROACH UPON PRIVATE OR PUBLIC LANDS WITHOUT WRITTEN APPROVAL FROM THE PROPERTY OWNER OR LAND MANAGEMENT AGENCY.
6. SHOULD ANY QUESTIONS ARISE OR ANY DISCREPANCIES BE NOTED IN THE PLANS, THE ENGINEER SHOULD BE CONSULTED PRIOR TO CONSTRUCTION OF THE AFFECTED ITEMS.
7. THE CONTRACTOR SHALL PROTECT ALL EXISTING SURVEY MONUMENTS FROM DAMAGE DURING CONSTRUCTION OPERATIONS. ANY MONUMENTS DISTURBED BY THE CONTRACTOR SHALL BE RESET AT THE CONTRACTOR'S EXPENSE. THE CONTRACTOR AND THE ENGINEER SHALL NOTE THESE MONUMENTS IN THE FIELD PRIOR TO CONSTRUCTION.
8. ANY DAMAGE TO PUBLIC ROADWAYS SHALL BE REPAIRED IMMEDIATELY AND PRIOR TO CONTINUING OPERATIONS. DUST SHALL BE PROPERLY CONTROLLED, AND ANY MUD OR OTHER MATERIAL TRACKED OR OTHERWISE DEPOSITED ON THE ROADWAY SHALL BE REMOVED DAILY OR AS ORDERED BY THE ENGINEER.
9. IF THE OWNER HAS LIVESTOCK PRESENT ON THE PROPERTY AT THE TIME OF CONSTRUCTION THE CONTRACTOR IS TO CLOSE ANY GATES THEY OPEN WHEN ACCESSING THE JOB SITE.

UTILITY GENERAL NOTES

- 1) THE UTILITIES SHOWN ON THE PLANS ARE PLOTTED FROM THE BEST AVAILABLE INFORMATION AT THE TIME OF DESIGN. AS MANY OF THE UTILITIES ARE PRIVATE SERVICE LINES WITHOUT TRACER WIRE, ACCURATE LOCATES ARE NOT AVAILABLE. THE INFORMATION SHOWN ON THESE PLANS CONCERNING TYPE AND LOCATION OF UTILITIES IS NOT GUARANTEED TO BE ACCURATE OR ALL INCLUSIVE. SOME UTILITIES MAY HAVE BEEN ADDED OR RELOCATED PRIOR TO CONSTRUCTION. IT SHALL BE THE CONTRACTOR'S RESPONSIBILITY TO VERIFY ALL LOCATIONS OF EXISTING STRUCTURES AND UTILITIES SHOWN ON THE DRAWINGS AND ASCERTAIN WHETHER ANY OTHER STRUCTURE AND UTILITIES MAY EXIST. EVERY REASONABLE MEANS SHALL BE USED, INCLUDING FIELD LOCATION OF THE UTILITY USING WHATEVER PROSPECTING MEANS ARE NECESSARY. THE CONTRACTOR ASSUMES RESPONSIBILITY FOR THE PROTECTION OF ALL UTILITIES DURING THE WORK, AND SHALL HOLD THE OWNER AND THEIR CONSULTANTS HARMLESS FOR ANY AND ALL DAMAGES TO UTILITIES ARISING FROM CONSTRUCTION OPERATIONS.
- 2) THE CONTRACTOR SHALL NOTIFY ALL AFFECTED UTILITIES AT LEAST TWO (2) BUSINESS DAYS, NOT INCLUDING THE ACTUAL DAY OF NOTICE, PRIOR TO COMMENCING SUCH OPERATIONS. THE CONTRACTOR SHALL CONTACT THE UTILITY NOTIFICATION CENTER OF COLORADO (UNCC) AT 811 OR 1-800-922-1987, TO HAVE LOCATIONS OF UNCC REGISTERED LINES MARKED BY MEMBER COMPANIES. ALL OTHER UNDERGROUND FACILITIES SHALL BE LOCATED BY CONTACTING THE RESPECTIVE OWNER. UTILITY SERVICE LATERALS SHALL ALSO BE LOCATED PRIOR TO BEGINNING EXCAVATION OR GRADING.
- 3) THE CONTRACTOR SHALL VERIFY AND DOCUMENT THE CONDITION OF EXISTING UTILITIES (VISIBLE FACILITIES) WITH THE ENGINEER AND REPRESENTATIVES FROM THE UTILITY COMPANIES PRIOR TO COMMENCEMENT OF CONSTRUCTION.
- 4) THE CONTRACTOR SHALL FULLY COORDINATE UTILITY WORK WITH THE AFFECTED UTILITY PROVIDER AS APPROPRIATE.



**DAVIS ENGINEERING SERVICE, INC.**

THIS DRAWING IS THE PROPERTY OF DAVIS ENGINEERING SERVICE, INC. AND IS NOT TO BE REPRODUCED, COPIED, OR TRANSMITTED IN ANY FORM WITHOUT WRITTEN APPROVAL FROM DAVIS ENGINEERING SERVICE, INC.

CHECKED	DATE	DATE	DATE	DATE	DATE
AS NOTED	8/23/24				

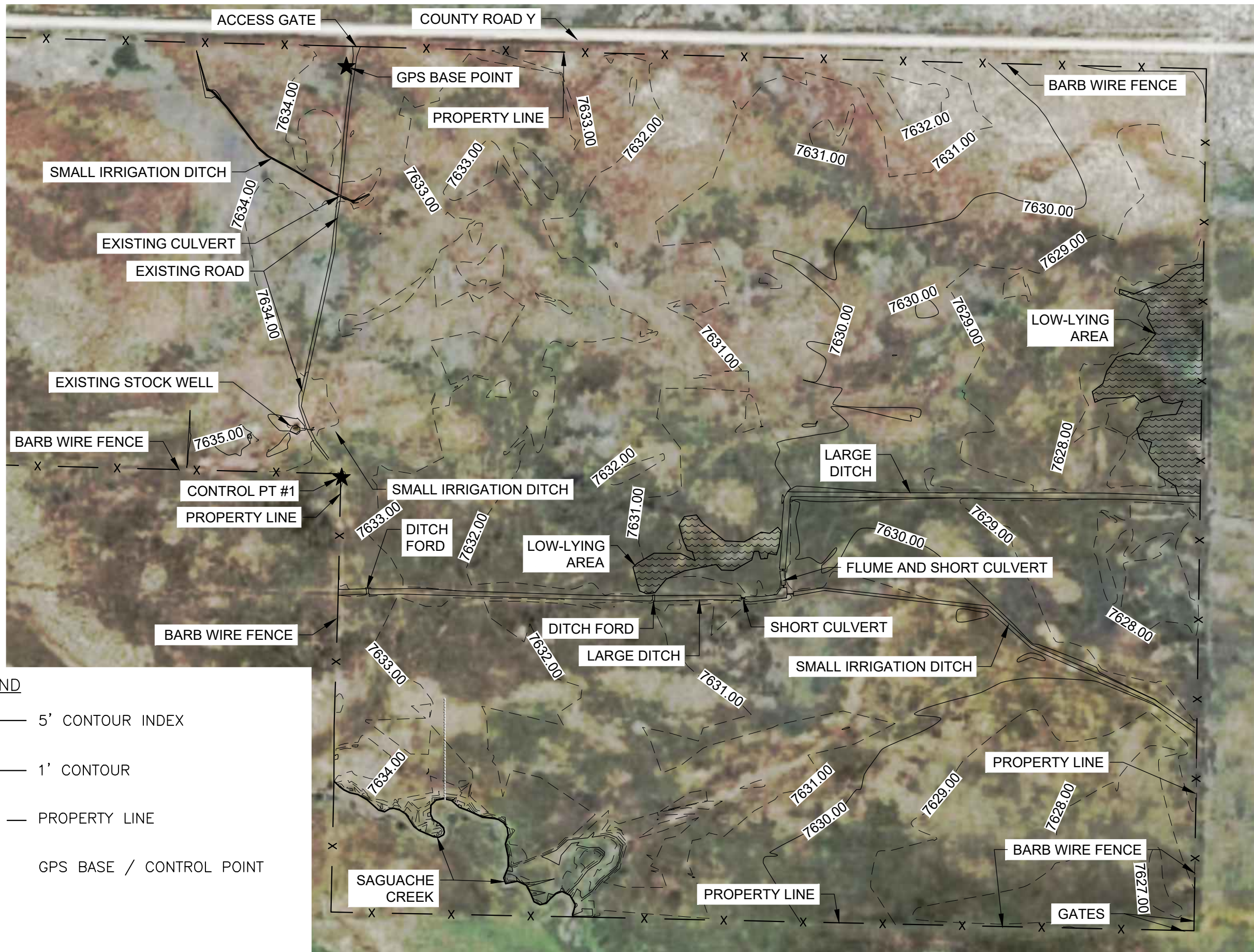
ELEVATION BASE ASSUMED



CLIENT  
Special Improvement District No. 5  
8805 Independence Way  
Alamosa, CO 81101

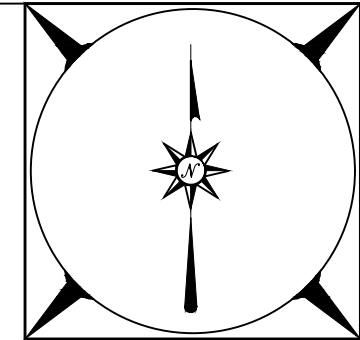
PROJECT  
Large Capacity Augmentation Well #2  
Pipeline & Road

NOTES  
Site & Utility Notes



- LEGEND**
- 5' CONTOUR INDEX
  - 1' CONTOUR
  - x — PROPERTY LINE
  - ★ GPS BASE / CONTROL POINT

**EXISTING CONDITIONS SITE MAP**  
Scale 1":300'



**DAVIS ENGINEERING SERVICE, INC.**

SINCE 1948

**DES**

THIS DRAWING IS THE PROPERTY OF DAVIS ENGINEERING SERVICE, INC. AND IS NOT TO BE REPRODUCED, COPIED, OR TRANSMITTED IN ANY FORM OR BY ANY MEANS, WITHOUT THE WRITTEN APPROVAL OF DAVIS ENGINEERING SERVICE, INC.

PROJECT	CHECKED	DATE
CMP/WSS	AS NOTED	8/23/24
WSS	APPROVED	CMP

DAVIS ENGINEERING SERVICE, INC.  
1400 ALAMOSA AVENUE  
ALAMOSA, COLORADO 81101  
PHONE: (719) 589-3000  
FAX: (719) 589-1712

ELEVATION BASE ASSUMED

REV.	DATE	BY	APP'D.

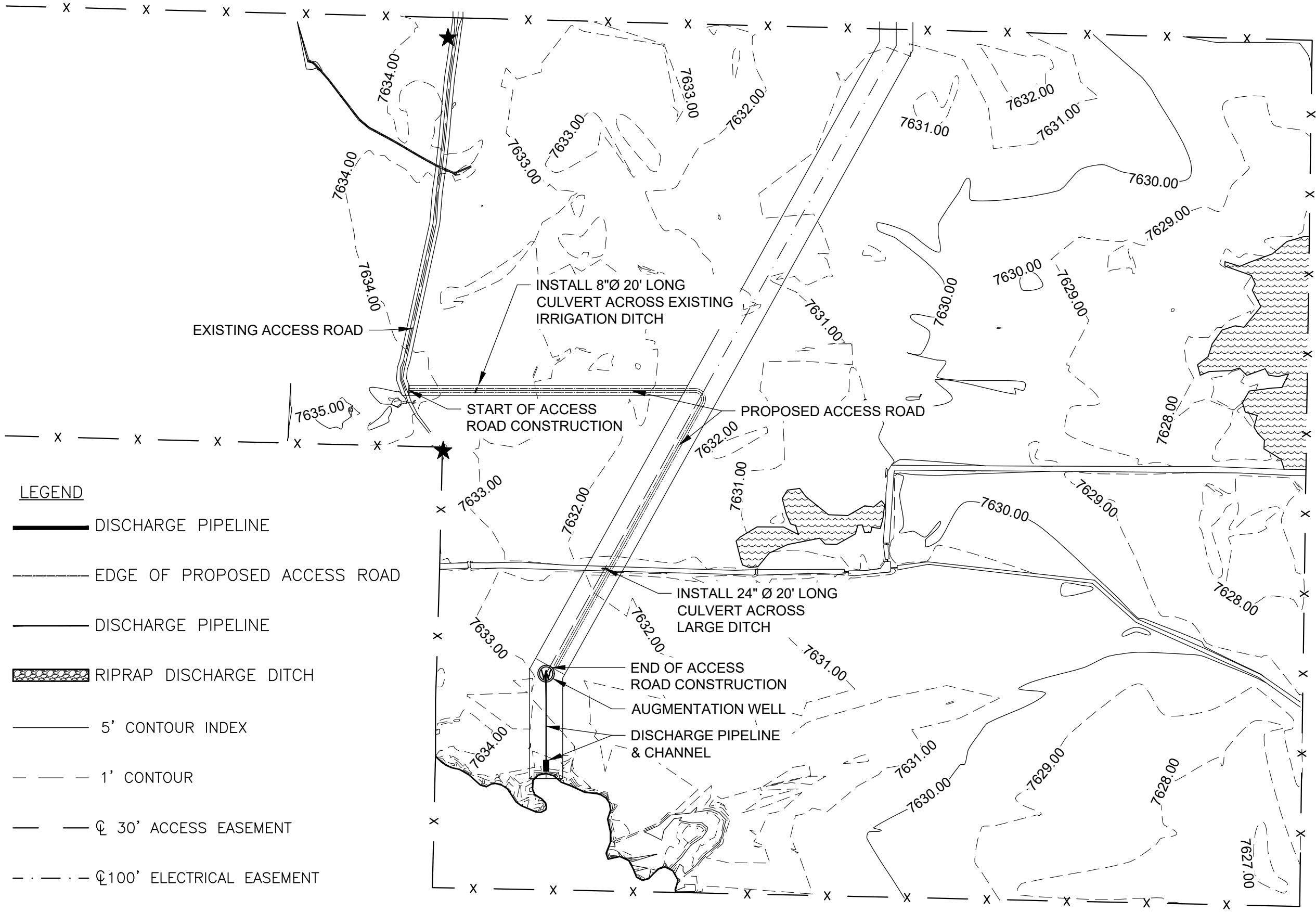


CLIENT



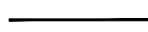

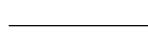


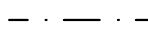


Special Improvement District No. 5  
8805 Independence Way  
Alamosa, CO 81101

Large Capacity Augmentation Well #2  
Pipeline & Road

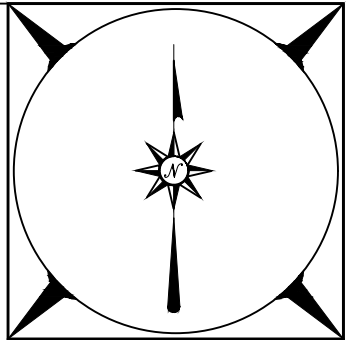
Existing Conditions Map



**LEGEND**

-  DISCHARGE PIPELINE
-  EDGE OF PROPOSED ACCESS ROAD
-  DISCHARGE PIPELINE
-  RIPRAP DISCHARGE DITCH
-  5' CONTOUR INDEX
-  1' CONTOUR
-  30' ACCESS EASEMENT
-  100' ELECTRICAL EASEMENT
-  PROPOSED AUGMENTATION WELL
-  GPS BASE / CONTROL POINT

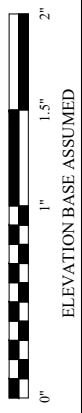
**PROPOSED CONSTRUCTION SITE MAP**  
Scale 1":300'



**DAVIS ENGINEERING SERVICE, INC.**

THIS DRAWING IS THE PROPERTY OF DAVIS ENGINEERING SERVICE, INC. AND IS NOT TO BE LOANED, REPRODUCED, COPIED, OR IN ANY MANNER USED WITHOUT THE WRITTEN APPROVAL OF DAVIS ENGINEERING SERVICE, INC.

PROJECT	CHECKED	DATE	BY
CMP/WSS	AS NOTED	8/23/24	
WSS	CMP		
REV.	DATE	BY	APP'D.



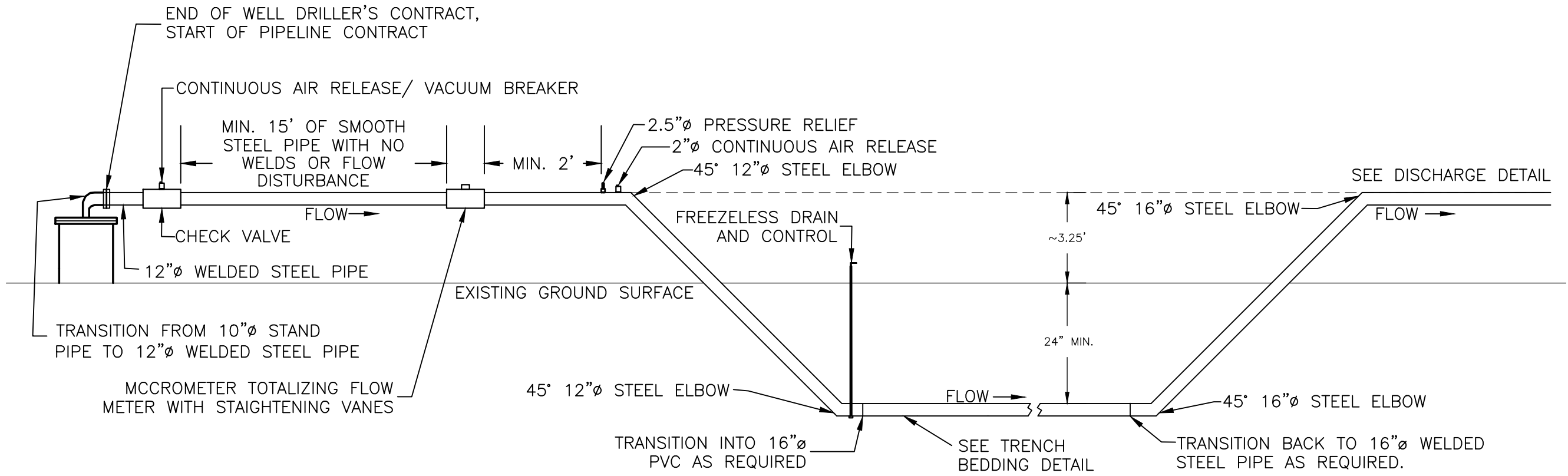
Special Improvement District No. 5  
8805 Independence Way  
Alamosa, CO 81101

Large Capacity Augmentation Well #2  
Pipeline & Road

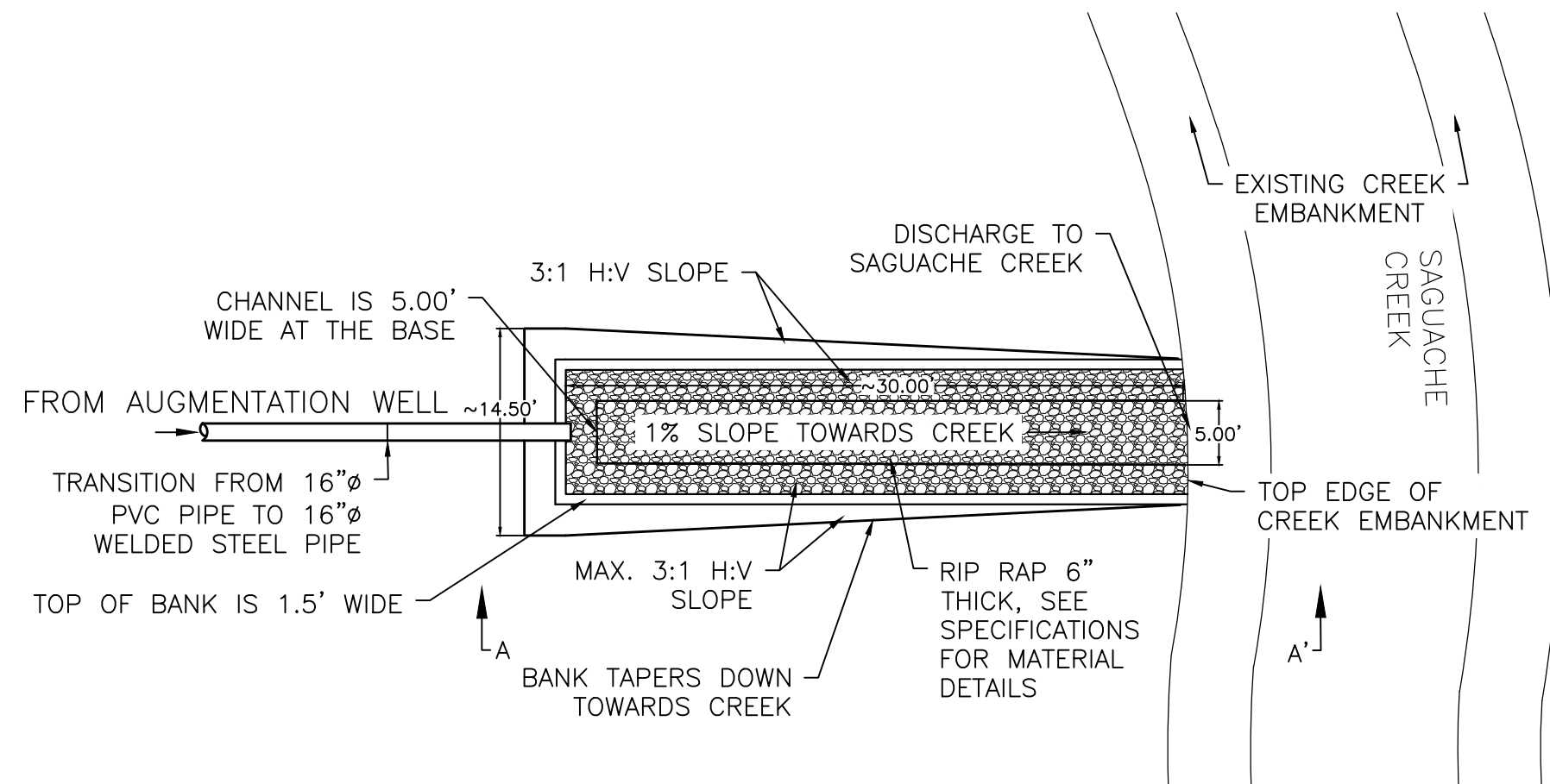
Proposed Construction Map

E02068

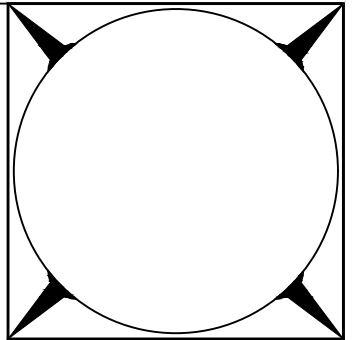
Sheet 4 of 9



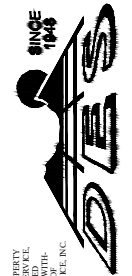
**AUGMENTATION PIPELINE SUBSURFACE DETAIL  
(NOT TO SCALE)**



**PLAN VIEW  
DISCHARGE TO CREEK  
(NOT TO SCALE)**



**DAVIS ENGINEERING SERVICE, INC.**



THIS DRAWING IS THE PROPERTY OF DAVIS ENGINEERING SERVICE, INC. AND IS NOT TO BE REPRODUCED, COPIED, OR TRANSMITTED IN ANY FORM OR BY ANY MEANS WITHOUT THE WRITTEN APPROVAL OF DAVIS ENGINEERING SERVICE, INC.

PROJECT NO.	DATE	BY	APP'D.
CHECKED	DATE	BY	APP'D.
DESIGNED	DATE	BY	APP'D.
DRAWN	DATE	BY	APP'D.
SCALE	AS NOTED		
APPROVED	8/23/24		
CMP			
WSS			



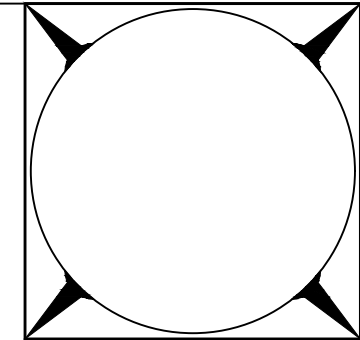
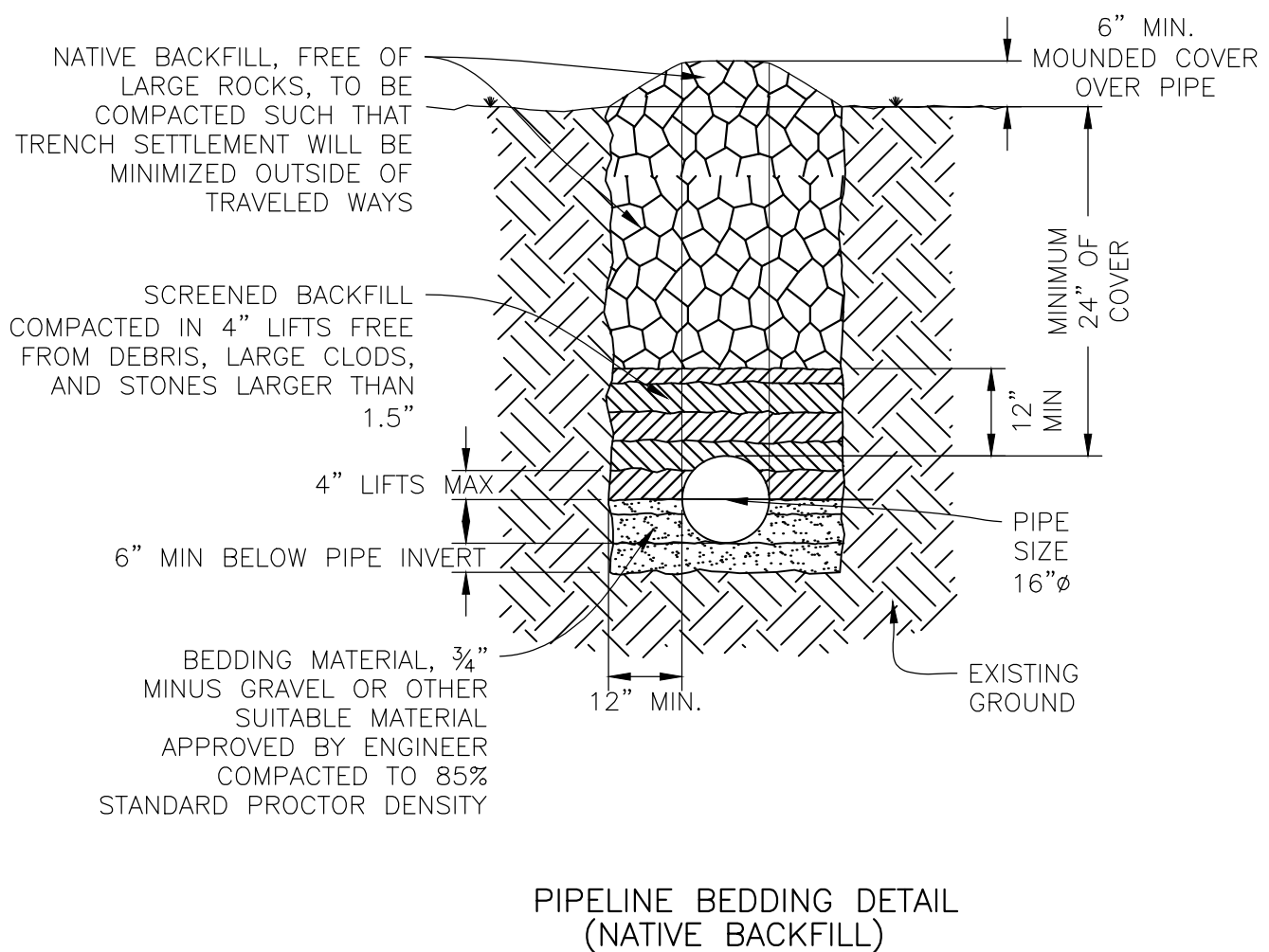
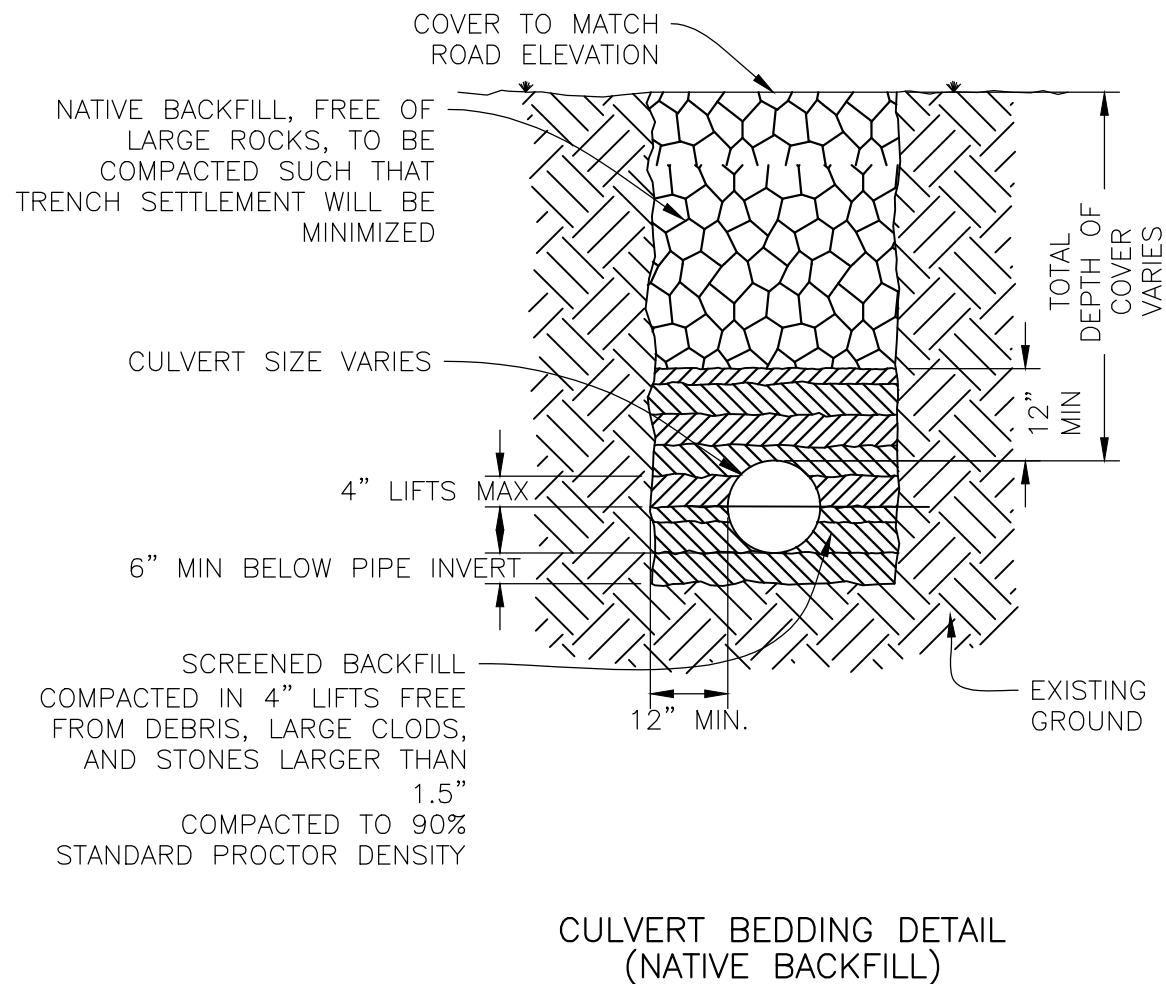
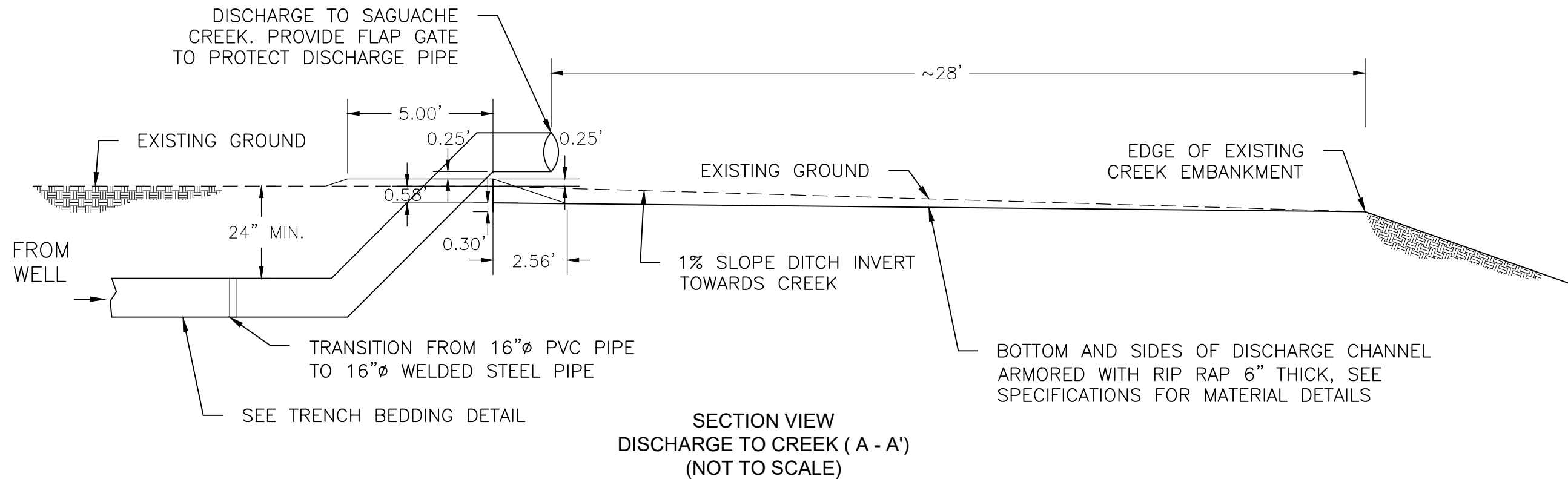
Special Improvement District No. 5  
8805 Independence Way  
Alamosa, CO 81101

Large Capacity Augmentation Well #2  
Pipeline & Road

Detail Sheet 1

E02068

Sheet 5 of 9

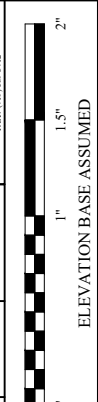


DAVIS ENGINEERING SERVICE, INC.



THIS DRAWING IS THE PROPERTY OF DAVIS ENGINEERING SERVICE, INC. AND IS NOT TO BE REPRODUCED, COPIED, OR TRANSMITTED IN ANY FORM OR BY ANY MEANS, WITHOUT THE WRITTEN APPROVAL OF DAVIS ENGINEERING SERVICE, INC.

PROJECT	CHECKED	DATE	BY
CMP/WSS	AS NOTED	8/23/24	
WSS	CMP		
DATE	BY	APPR.	REV.



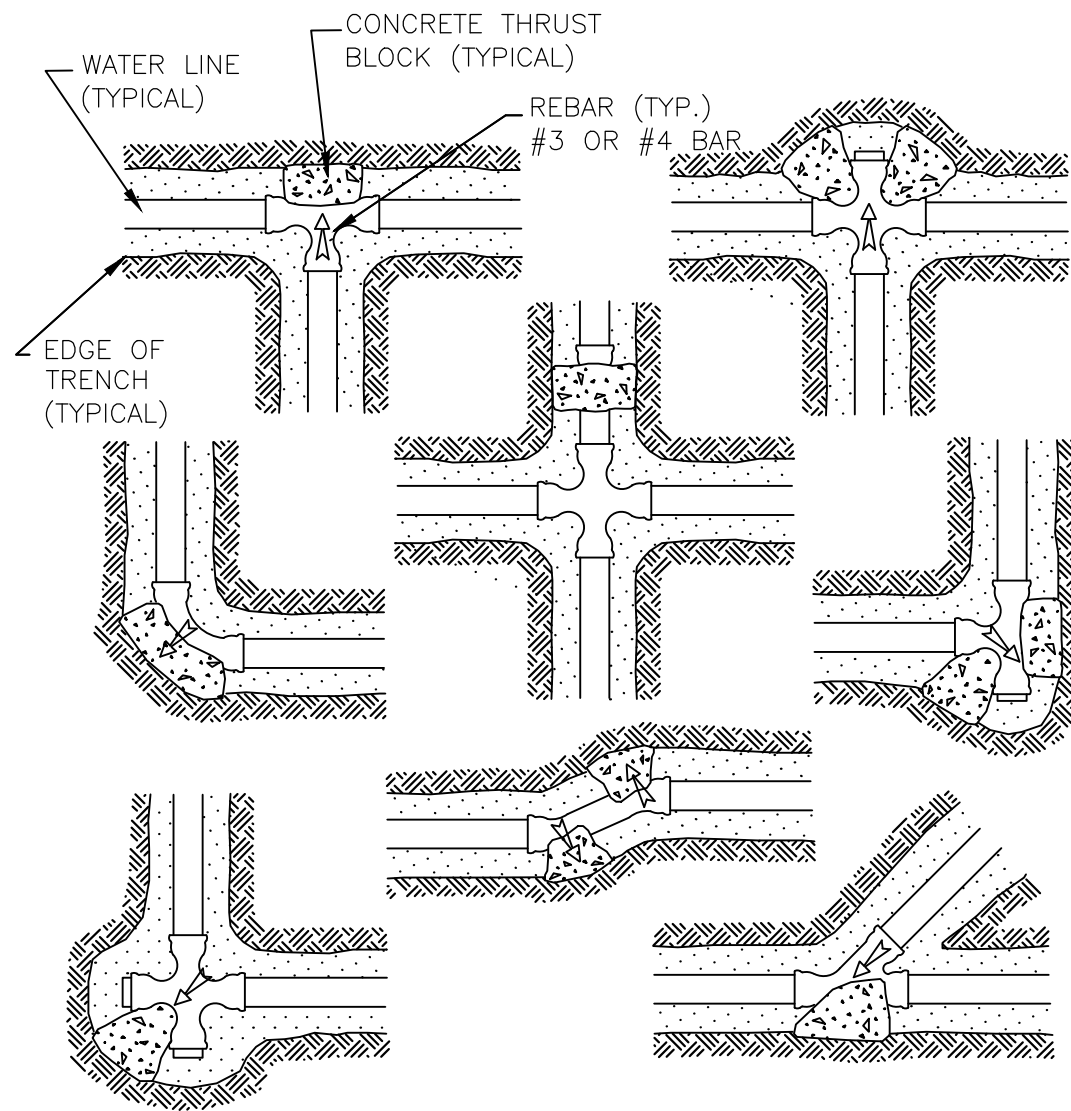
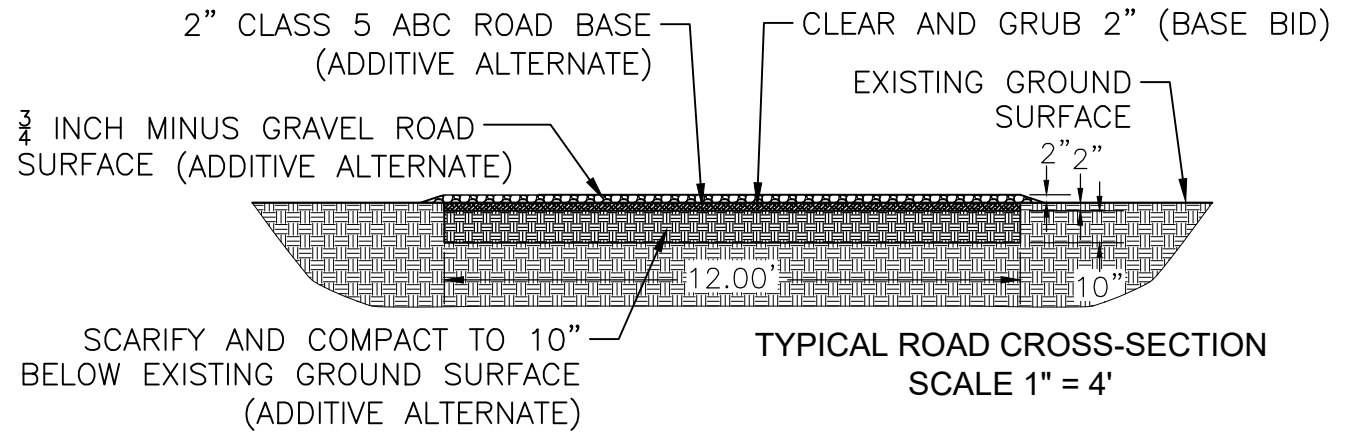
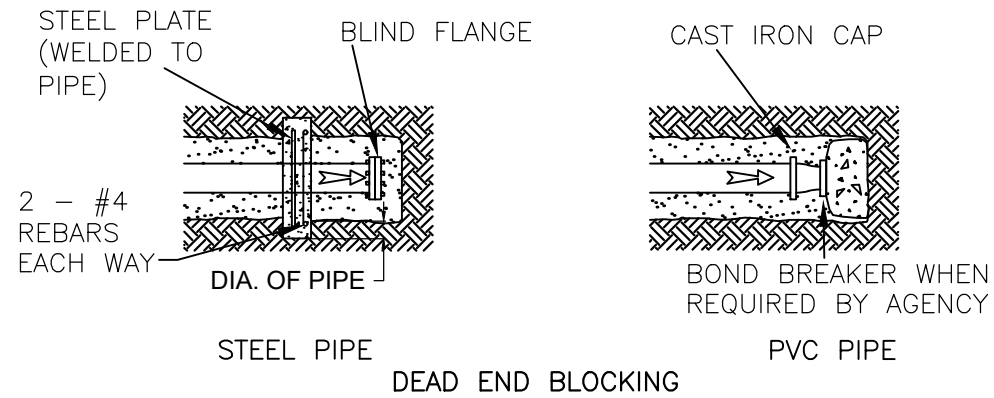
CLIENT  
Special Improvement District No. 5  
8805 Independence Way  
Alamosa, CO 81101

PROJECT  
Large Capacity Augmentation Well #2  
Pipeline & Road

DETAIL  
Detail Sheet 2

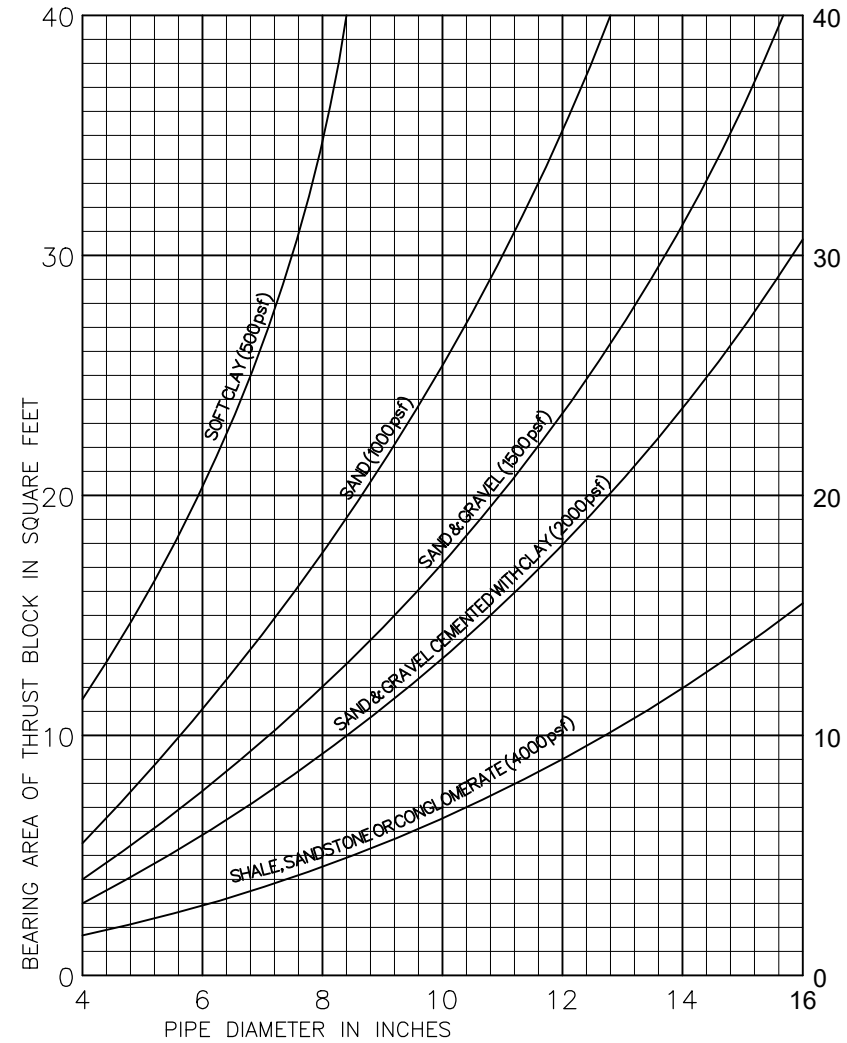
E02068

Sheet 6 of 9



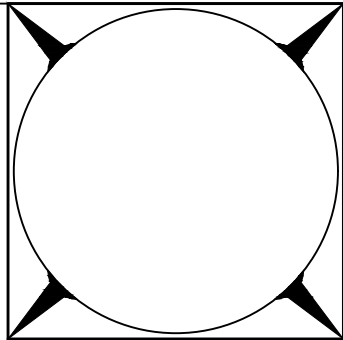
**TYPICAL CONCRETE THRUST BLOCK DETAILS**  
NO SCALE

- NOTES:
- 1 CONCRETE SHALL BE 470-C-2000.
  - 2 SEE DRAWING FOR BEARING AREAS.
  - 3 BEARING AREAS TO BE FLAT AND CORNERS SQUARE

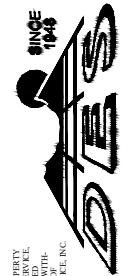


NOTES:

- 1 BASED ON 225 PSI TEST PRESSURE AND BEARING VALUES OF DRY SOIL.
- 2 VALUES FROM CURVES ARE FOR TEES AND DEADENDS, I.E.; STRAIGHT LINE THRUST.  
FOR 90° BEND 1.4 x VALUE FROM CURVE  
FOR 45° BEND 0.8 x VALUE FROM CURVE  
FOR 22-1/2° BEND 0.4 x VALUE FROM CURVE
- 3 FOR CONDITIONS NOT COVERED BY CURVES, SPECIAL THRUST BLOCKS MUST BE COMPUTED AND APPROVED.

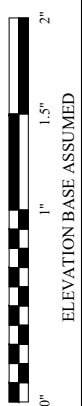


**DAVIS ENGINEERING SERVICE, INC.**



THIS DRAWING IS THE PROPERTY OF DAVIS ENGINEERING SERVICE, INC. AND IS NOT TO BE LOANED, REPRODUCED, COPIED, OR IN ANY MANNER DISSEMINATED WITHOUT THE WRITTEN APPROVAL OF DAVIS ENGINEERING SERVICE, INC.

PROJECT	DATE	APPROVED	DATE
CMP/WSS	8/23/24	CMP	
AS NOTED			
BY	DATE	BY	DATE



Special Improvement District No. 5  
8805 Independence Way  
Alamosa, CO 81101

Large Capacity Augmentation Well #2  
Pipeline & Road

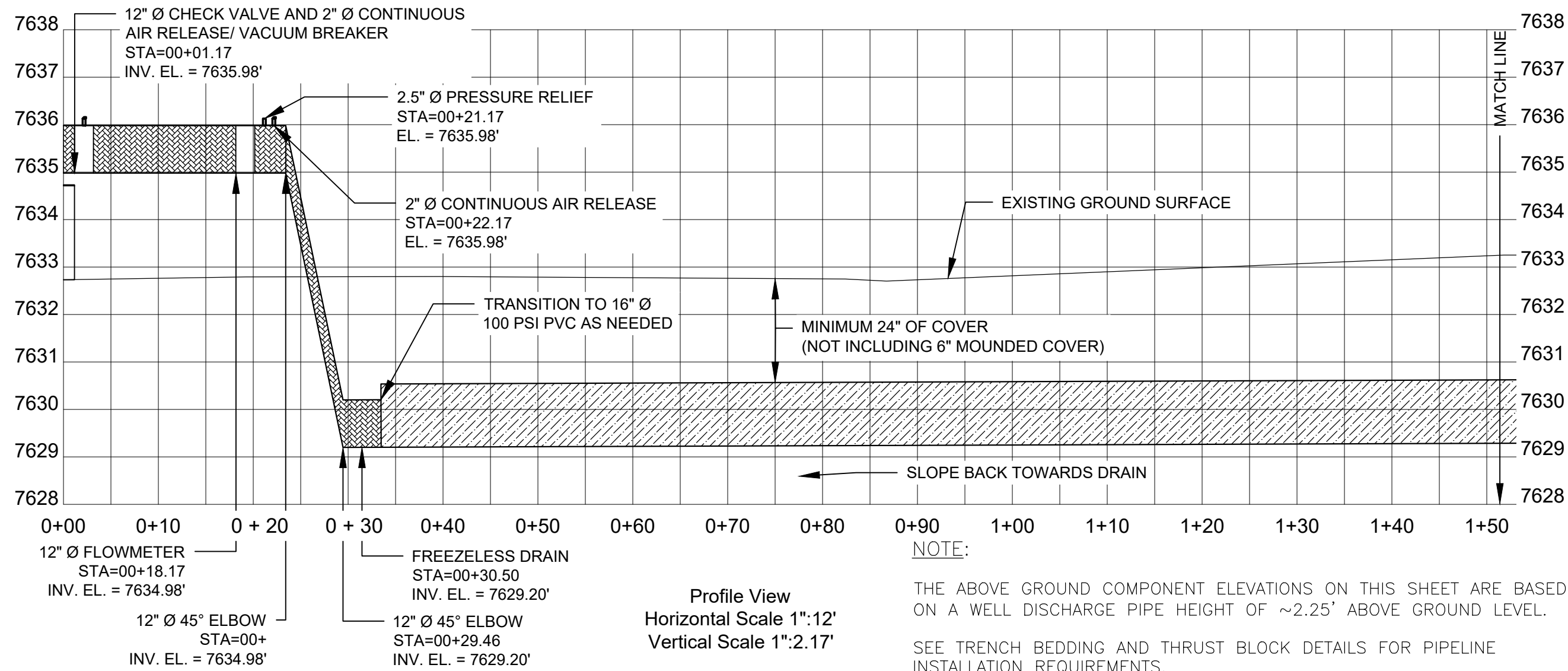
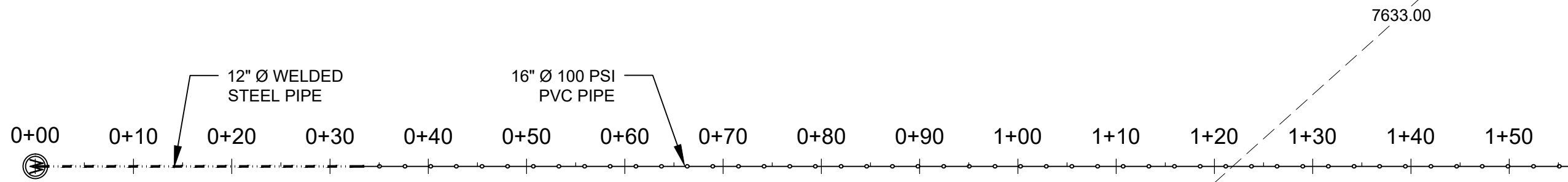
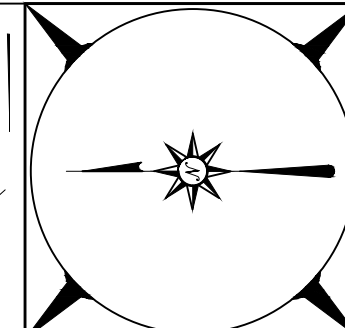
Detail Sheet 3

E02068

**LEGEND**

- 12"  $\phi$  WELDED STEEL PIPE
- 5' CONTOUR INDEX
- 16"  $\phi$  PVC PIPE
- 1' CONTOUR
- 16"  $\phi$  WELDED STEEL PIPE
- RIPRAP DISCHARGE DITCH

Plan View  
Scale 1":12'



Profile View  
Horizontal Scale 1":12'  
Vertical Scale 1":2.17'

**NOTE:**  
THE ABOVE GROUND COMPONENT ELEVATIONS ON THIS SHEET ARE BASED ON A WELL DISCHARGE PIPE HEIGHT OF ~2.25' ABOVE GROUND LEVEL.  
SEE TRENCH BEDDING AND THRUST BLOCK DETAILS FOR PIPELINE INSTALLATION REQUIREMENTS.

**DAVIS ENGINEERING SERVICE, INC.**

DAVIS ENGINEERING SERVICE, INC.  
1044  
DAVIS ENGINEERING SERVICE, INC.  
ALAMOSA, COLORADO 81101  
PHONE: (719) 581-3000  
FAX: (719) 581-1712

DESIGNED BY	CHECKED BY	DATE
CMP/WSS	AS NOTED	8/23/24
WSS	CMP	

SCALE: 1" = 1.5' (VERTICAL)  
1" = 20' (HORIZONTAL)  
ELEVATION BASE ASSUMED



Special Improvement District No. 5  
8805 Independence Way  
Alamosa, CO 81101

Large Capacity Augmentation Well #2  
Pipeline & Road

Pipeline Plan & Profile 1

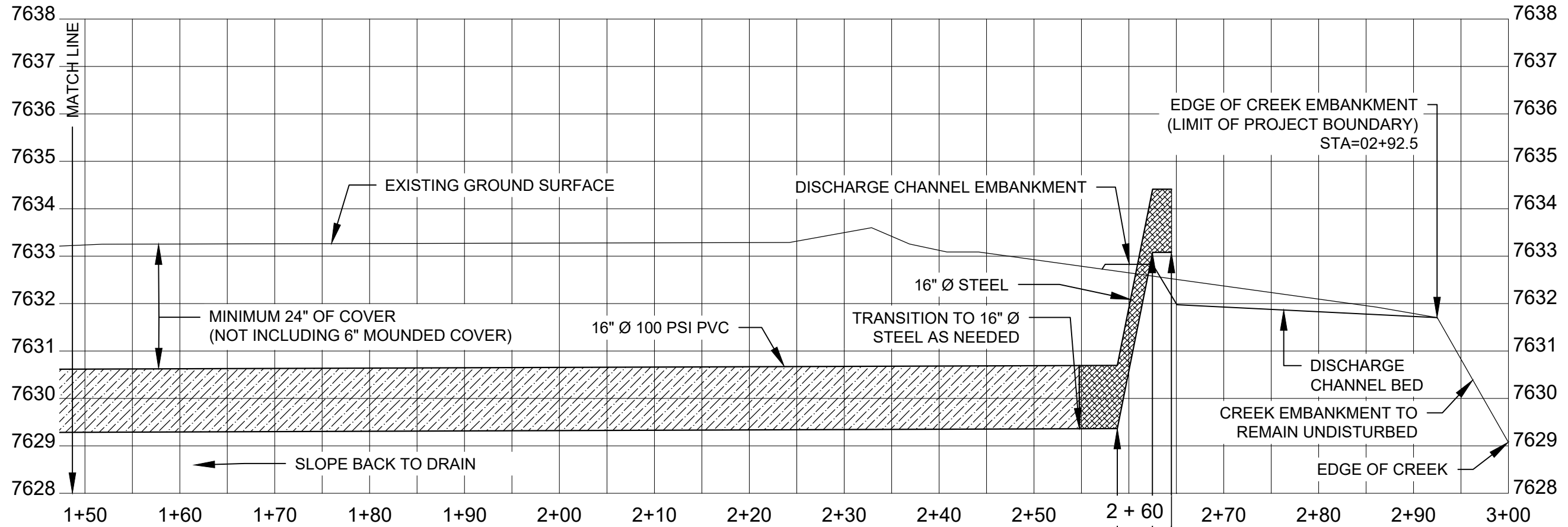
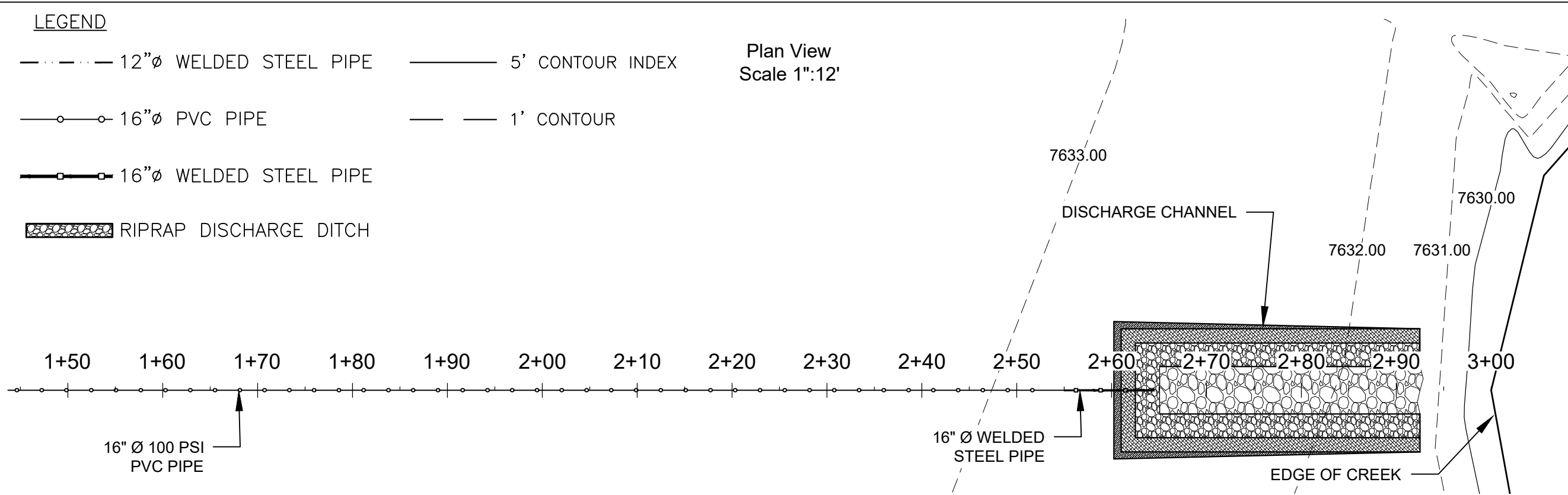
E02068  
Sheet 8 of 9



**LEGEND**

- 12"Ø WELDED STEEL PIPE
- 5' CONTOUR INDEX
- 16"Ø PVC PIPE
- 1' CONTOUR
- 16"Ø WELDED STEEL PIPE
- ▨ RIPRAP DISCHARGE DITCH

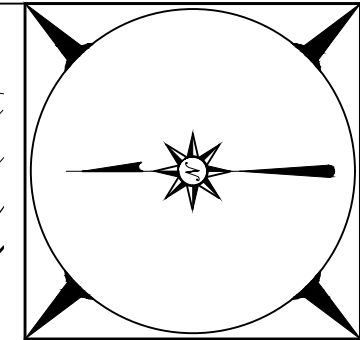
Plan View  
Scale 1":12'



**NOTE:**

SEE TRENCH BEDDING AND THRUST BLOCK DETAILS FOR PIPELINE INSTALLATION REQUIREMENTS.

Profile View  
Horizontal Scale 1":12'  
Vertical Scale 1":2.17'



**DAVIS ENGINEERING SERVICE, INC.**

DAVIS ENGINEERING SERVICE, INC.  
1044  
1000 S. ALAMOSA AVENUE  
ALAMOSA, COLORADO 81101  
PHONE: (719) 589-3000  
FAX: (719) 589-1712

DESIGNED BY	DATE	APPROVED BY	DATE
CHECKED BY	DATE	APPROVED BY	DATE
PROJECT NO.	AS NOTED	DATE	8/23/24
DESIGNED BY	CMP	DATE	
PROJECT NO.	WSS	DATE	

SCALE: 1" = 1.5' (VERTICAL)  
1" = 2'

ELEVATION BASE ASSUMED



Special Improvement District No. 5  
8805 Independence Way  
Alamosa, CO 81101

Large Capacity Augmentation Well #2  
Pipeline & Road

Pipeline Plan & Profile 2

E02068

Sheet 9 of 9